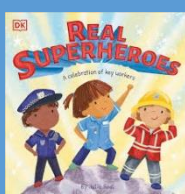
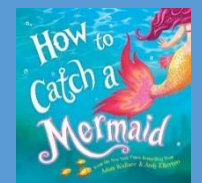
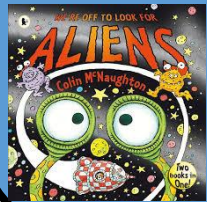
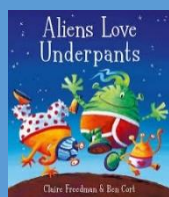
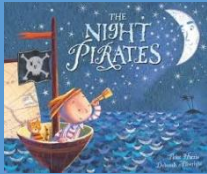




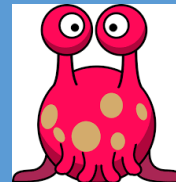
Year R

Key Texts



The Big Question-

I am me, but who could I be?



Summer 1

Our big question this half term gives us the opportunity to use our imagination and explore the world of make believe as we focus on role-play.

We will look at pirates and mermaids, creating our own treasure, making maps and going on treasure hunts. Next, we will be thinking about aliens and designing our own. We will make our aliens thinking about the different materials we will need.

Finally, we will be exploring superheroes and real-life superheroes, thinking about people who help us.

R.E

Our big question is...

What makes a place special?

We will be looking at places that are special to us. We will be looking at similarities and differences of places of worship.

The value this half term is courage.

Personal, Social, Emotional Development-

Identify and moderate their own feelings socially and emotionally. Show resilience and perseverance in the face of challenge. Think about the perspectives of others.

Communication & Language –

Articulate their ideas and thoughts in well-formed sentences. Connect one idea or action to another using a range of connectives.

Physical Development-

Further develop and refine a range of ball skills including: throwing, catching, kicking, passing, batting, and aiming.

Maths-

Continue to confidently subitise to 5. Identify number facts of composition of numbers 6-10. Confidently count to and from 20 with increased accuracy in the cardinal number.

Literacy- Continue to read words and phrases using phase 2 and phase 3 sounds and tricky words. Begin to read longer words. Begin to write sentences and captions independently.

Understanding of the World-

Draw information from a simple map. Understand that some places are special to members of their community.

Expressive Art & Design-

Develop storylines in their pretend play.